



# General Purpose IEC Fuses

DIN Fuses  
D-type  
DIAZED



D Fuse System

2 – 200 A, 500 V, 690 V

Line protection fuses gL-gG  
IEC 60269 parts 1, 3 and 3-1  
DIN VDE 0636 Parts 10, 30 and 31

Dimensions are stipulated in the following regulations:

- DIN 49360 D Fuse-links
- DIN 49515 D Fuse-links
- DIN 49367 D Fuse-links, long design
- DIN 49514 D Screw caps
- DIN 49510 D Fuse bases
- DIN 49362 D Gauge rings
- DIN 49516 D Screw gauge pieces

## Structure of the D fuse system

Like the modern NEOZED system, the D-Fuse system consists of fuse base, gauge piece, fuse link and screw cap. It is designed for a rated voltage of 500V. Noninterchangeability of rated current is guaranteed from one current level to the other above 6 Amps. This is ensured by graduating the diameter of the bottom contact of the fuse-link along with corresponding fixed diameters for the gauge piece.



# General Purpose IEC Fuses



## DIN Fuses D-type DIAZED

### D Fuse System D Fuse bases

for snap-on fastening 500 VAC / 690 VAC

Size	Rated in Current (A)	Pole	Max. cross sect. mm <sup>2</sup>	Previous Reference	Reference Number	Pack	Catalog Number
without shock-proof protection cover							
DII	25	1*	6	00685.100000	K207055	15	
DIII	63	4*	16	00686.400000	V215597	15	
with shock-proof protection cover							
DII	25	1	6	00685.110000	D211511	10	
DIII	63	4	16	00686.410000	C216110	10	

\* Terminal type see following pages



### D Fuse bases

for screw fixing 500 VAC / 690 VAC

Size	Rated in Current (A)	Pole	Max. cross sect. mm <sup>2</sup>	Previous Reference	Reference Number	Pack	Catalog Number
without shock-proof protection cover							
DII	25	1*	6	00081.100000	K218670	15	
DIII	63	4*	16	00072.400000	H212021	15	
with shock-proof protection cover							
DII	25	1*	6	00081.110000	Z219189	10	
DIII	63	4*	16	00072.410000	A212543	10	

\* Terminal type see following pages



### D Fuse-links

2 - 200A fast acting (CEE-16 standard), 500 VAC

Size	Rated in Current (A)	Gauge Color	Previous Reference	Reference Number	Pack	Catalog Number
NDZ	2	pink	00594.002000	C222918	25	
NDZ	4	brown	00594.004000	L200708	25	
NDZ	6	green	00594.006000	A201250	25	
NDZ	10	red	00594.010000	L201766	25	
NDZ	16	gray	00594.016000	D207049	25	
NDZ	20	blue	00594.020000	B211509	25	
NDZ	25	yellow	00594.025000	Y212541	25	
DII	2	pink	00597.002000	E213559	25	
DII	4	brown	00597.004000	D214064	25	
DII	6	green	00597.006000	L214577	25	
DII	10/6 (1)	red	00597.610000	X218152	25	
DII	10	red	00597.010000	S215089	25	
DII	16	gray	00597.016000	A216108	25	
DII	20	blue	00597.020000	J217128	25	
DII	25	yellow	00597.025000	P217639	25	
DIII	35	Black	00598.035000	J218669	25	
DIII	50	white	00598.050000	J222165	25	
DIII	63	copper	00598.063000	M200709	25	

(1) with base contact stud for 6 A





# General Purpose IEC Fuses

## DIN Fuses D-type DIAZED

### D Fuse System

#### D Fuse-links

2 -200 A gG, 500 VAC



Size	Rated in Current (A)	Gauge Color	Previous Reference	Reference Number	Pack	Catalog Number
NDZ	2	pink	00594.002700	W212539	25	
NDZ	4	brown	00594.004700	G213055	25	
NDZ	6	green	00594.006700	C213557	25	
NDZ	10	red	00594.010700	B214062	25	
NDZ	16	grey	00594.016700	J214575	25	
NDZ	20	blue	00594.020700	O215087	25	
NDZ	25	yellow	00594.025700	Q215593	25	
D II	2	pink	00597.002700	Z219718	25	
D II	4	brown	00597.004700	G222163	25	
D II	6	green	00597.006700	B222917	25	
D II	10/6 f1	red	00597.610700	D213558	25	
D II	10	red	00597.010700	K200707	25	
D II	16	grey	00597.016700	K201765	25	
D II	20	blue	00597.020700	A211508	25	
D II	25	yellow	00597.025700	X212540	25	
1 with base contact stud for 6 A (without VDE test mark)						
D III	35	black	00598.035700	C214063	25	
D III	50	white	00598.050700	K214576	25	
D III	63	copper	00598.063700	R215088	25	
D IV	80	silver	00595.080700	V216609	10	
D IV	100	red	00595.100700	M217637	10	
D V	125	yellow	00596.125700	V218150	10	
D V	160	copper	00596.160700	G218667	10	
D V	200	blue	00596.200700	W219186	10	

Characteristics see following pages

#### D Fuse system 690 VAC

In this design, the fuse base and gauge piece correspond to the 500 V standard for D III (E33). The extended fuse links D III and a special extended screw cap serve to complement the present system. D-type 690 V fuses are only available in size III.

#### D Fuse-links

2 - 63 A gG 690 VAC



Size	Rated in Current (A)	Gauge Color	Previous Reference	Reference Number	Pack	Catalog Number
D III	2	pink	00603.002700	R215594	25	
D III	4	brown	00603.004700	Z216107	25	
D III	6	green	00603.006700	W216610	25	
D III	10	red	00603.010700	H217127	25	
D III	16	grey	00603.016700	N217638	25	
D III	20	blue	00603.020700	W218151	25	
D III	25	yellow	00603.025700	H218668	25	
D III	35	black	00603.035700	X219187	25	
D III	50	white	00603.050700	A219719	25	
D III	63	copper	00603.063700	H222164	25	

#### D Screw-cap long design 690 VAC



D III	63		00605.000000	L218671	25	
-------	----	--	--------------	---------	----	--

Dimensions see following pages

# General Purpose IEC Fuses



## DIN Fuses

### D-type

### DIAZED

## D Fuse System

### D Screw caps

Porcelain and Plastic, 500 VAC

Size	Rated in Current (A)	Gauge Color	Previous Reference	Reference Number	Pack	Catalog Number
Porcelain with testing hole						
DII	25	E 27	00690.000200	E218619	20	
DIII	63	E 33	00691.000200	B213004	20	
Porcelain without testing hole						
NDZ	25	E 16	00589.000000	Z216613	50	
DII	25	E 27	00690.000000	Z218108	20	
DIII	63	E 33	00691.000000	F211973	20	
DIV	100	R11/4	00592.000000	Y216060	10	
Plastic with testing hole						
DII	25	E 27	02071.000000	L201720	20	
DII	63	E 33	02072.000000	E214019	20	



### D Gauge piece

Size	Rated in Current (A)	Gauge Color	Previous Reference	Reference Number	Pack	Catalog Number
NDZ	2	pink	01655.002000	B212544	50	
NDZ	4	brown	01655.004000	M213060	50	
NDZ	6	green	01655.006000	H213562	50	
NDZ	10	red	01655.010000	G214067	50	
NDZ	16	grey	01655.016000	P214580	50	



### D Screw gauge pieces for DII / DIII

D II	2	pink	01657.002000	A219190	25	
D II	4	brown	01657.004000	D219722	25	
D II	6	green	01657.006000	L222167	25	
D II	10	red	01657.010000	F222921	25	
D II	16	grey	01657.016000	P200711	25	
D II	20	blue	01657.020000	D201253	25	
D II	25	yellow	01657.025000	P201769	25	
D III	35	black	01658.035000	C207071	25	
D III	50	white	01658.050000	E211512	25	
D III	63	copper	01658.063000	J212022	25	



### D Gauge rings for DII / DIII, TRI60 System

D II	2	pink	01652.002000	W215092	50	
D II	4	brown	01652.004000	W215598	50	
D II	6	green	01652.006000	D216111	50	
D II	10	red	01652.010000	A216614	50	
D II	16	grey	01652.016000	M217131	50	
D II	20	blue	01652.020000	S217642	50	
D II	25	yellow	01652.025000	A218155	50	
D III	2	pink	01653.002000	M218672	50	
D III	4	brown	01653.004000	E219723	50	
D III	6	green	01653.006000	M222168	50	
D III	10	red	01653.010000	G222922	50	
D III	16	grey	01653.016000	Q200712	50	
D III	20	blue	01653.020000	E201254	50	
D III	25	yellow	01653.025000	Q201770	50	
D III	35	black	01653.035000	L207079	50	
D III	50	white	01653.050000	F211513	50	



Dimensions see following pages



# General Purpose IEC Fuses

## DIN Fuses D-type DIAZED



### Key for D gauge pieces

### D Fuse System



Size	Previous Reference	Reference Number	Pack	Catalog Number
DII, DIII	01657.993000	E216112	10	

### D Cover insulating material



#### Single pole

D II (40 mm width)	00685.700000*	H214068	30	
D III (50 mm width)	00686.700000*	X215093	30	
D II (45 mm width)	00685.709000	Q214581	30	
D III (54 mm width)	00686.709000	X215599	30	

\* Standart version

#### Triple pole

D II	00625.700000	N213061	8	
D III	00626.700000	J213563	8	

### D Touch Protection rings



#### Plastic

D II	00181.900000	K222120	50	
D III	00182.900000	A222870	50	

#### Porcelain

D II	00081.900000	C219675	30	
D III	00072.900000	K212023	20	

### D Adapter fittings



#### for DII-fuses links in D III-bases

D II/ D III	00581.000000	C212545	50	
-------------	--------------	---------	----	--

DII Supply boards <sup>1)</sup>	02071.800000*	B216615*	10	
DII Industry <sup>2)</sup>	02071.810000	N217132	10	
DIII Supply boards <sup>1)</sup>	02072.800000*	T217643*	10	
DIII Industry <sup>2)</sup>	02072.810000	B218156	10	

\* For authorized energy supplier personnel only

<sup>1)</sup> black top, red screw pitch

<sup>2)</sup> red top, black screw pitch

### D Locking caps



### Locking keys

Supply boards	01714.820000*	K213564*	10	
Industry	01714.830000	J214069	10	

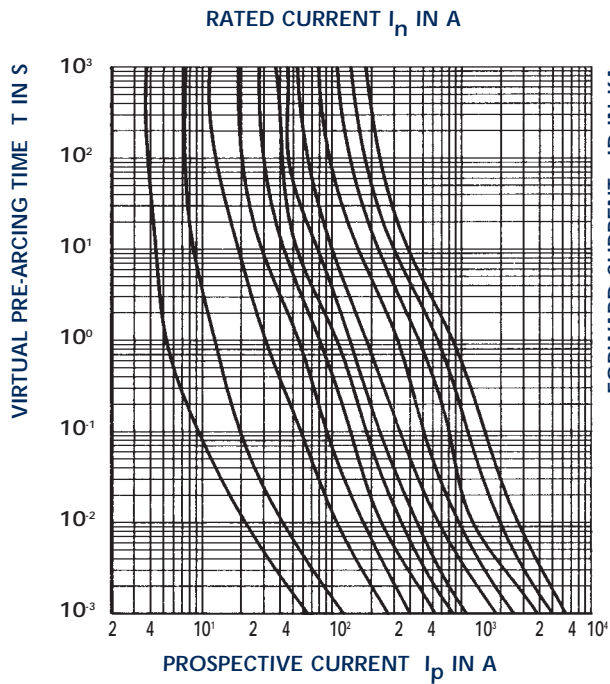
\*For authorized energy supplier personnel only

# General Purpose IEC Fuses

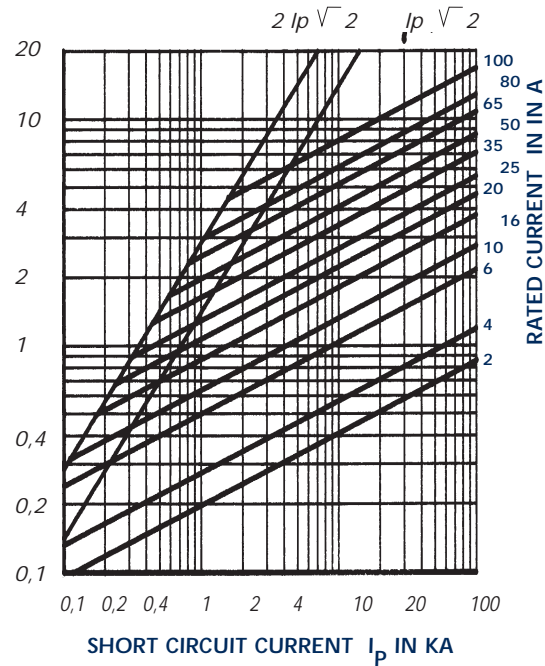


## DIN Fuses D-type DIAZED

### D Fuse System

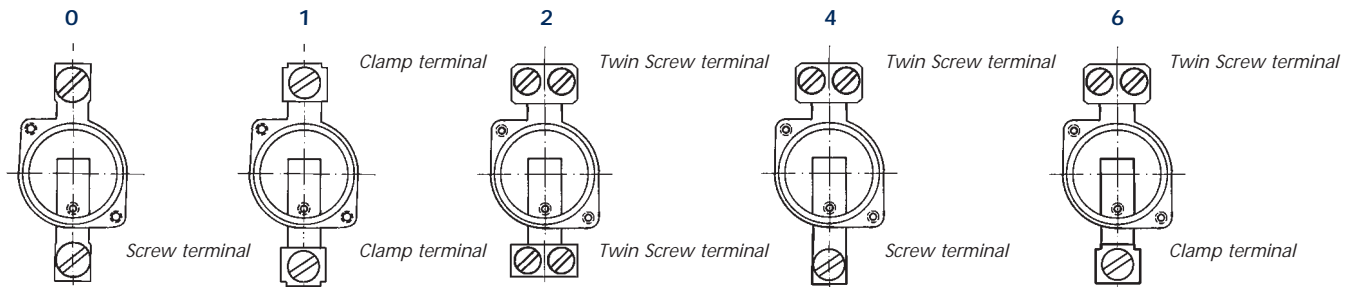


Time-current characteristics of D Fuses 2...100 A gL-gG

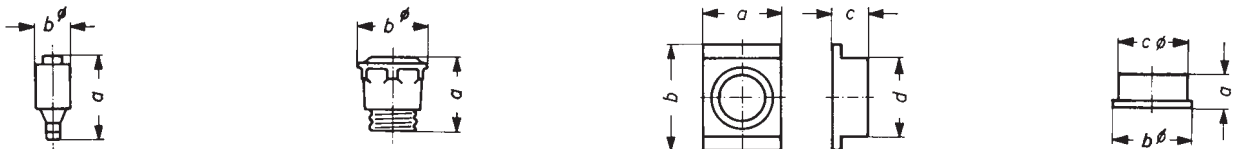


Forward current characteristics of DIAZED fuses 2...100 A gL-gG

### Terminal types



### Dimensions



#### D Fuse-links

Cat Number	$a_1$	bX
NDZ	50	12
DII	50	22
DIII	50	27
DIV	63	37
DV	65	45

#### D Screw caps

Cat Number	a	b
690.0002	42	34
691.0002	43	42
589.0002	34	27
690	42	34
691	43	42
592	52	60
2071	42	33
2072	43	40

#### D Covers

Cat Number	a	b	c
685.7	40	90	22
686.7	50	90	22
685.709	45	90	22
686.709	54	90	22
625.7	107	107	51
626.7	127	130	51

#### D touch protection rings

Cat Number	a	b	c
181.9	17,5	44,5	40,5
182.9	19	54	50,5
81.9	18,5	43,5	39,8
72.9	18	53,5	50,5



# General Purpose IEC Fuses

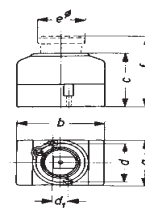
DIN Fuses  
D-type  
DIAZED



## Dimensions

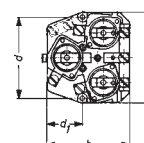
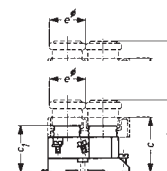
## D Fuse System

Catalog number	Sizes in mm						
	a	b	c	d	d1	eX	f
99	40	70	53	32	–	38	82
199	40	70	54	20	–	38	83
200	50	90	54	20	–	48	83

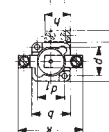
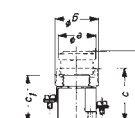


Catalog number	Sizes in mm							
	a	b	c	c1	d	d1	eX	f
625	90	81	54.5	46	80	35	37	81
626	109	100	54.5	46	95	49.5	46.5	81
625*	107	107	51	–	–	–	–	–
626*	127	130	51	–	–	–	–	–

\* with cover cap



Catalog number	Sizes in mm											
	a	b	c	c1	d	d1	eX	f	X	h	i	k
685/81	38	40	60	46	29	27	38	82	43	–	–	60
686/72	46	44	57	48	35	33,5	48	84	52	–	–	73



Catalog number	Sizes in mm							
	a	b	c	d	e	f	g	g1
120	42	52	60	44	38	85	12	37
121	52	62	63	54	48	88	13	38

